



834-F S Perry St. #1103
Castle Rock, CO
(303) 513.6604

J L A E X P L A I N E R

B A C K G R O U N D R E S E A R C H

G O O G L E E A R T H A N D E L E V A T I O N P R O F I L E S

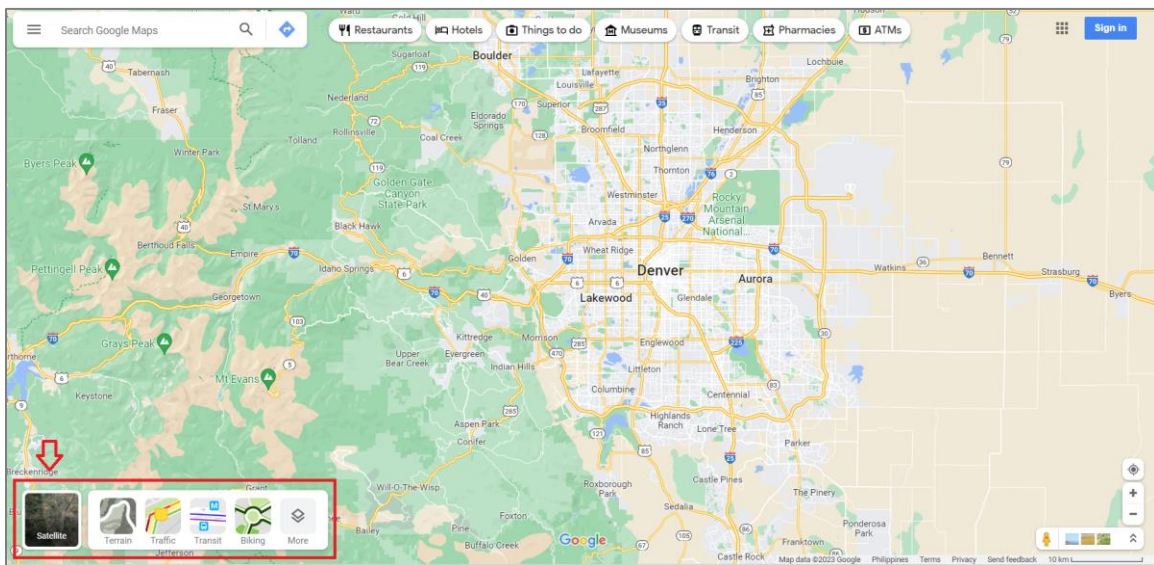
Before designing a new building, it is vital to identify and analyze the characteristics of the site. Conducting background research allows you to know the site elevation, existing vegetation, soil types, floodplain history, and site access which are all key aspects to consider during site selection or pre-design planning. This section will walk you through the process of conducting background research on possible building sites.

Google Maps and Google Earth are commonly used to conduct basic site research. Finding the building site's location and learning about its elevation profile are made easier through these websites/software. These can also aid in planning access routes and driveways for the building(s). Additionally, these tools can now be used to gain information about the site elevation, grading and drainage information at the site, and more. This explainer document will show you how to obtain site elevation information from Google Earth.

GOOGLE MAPS

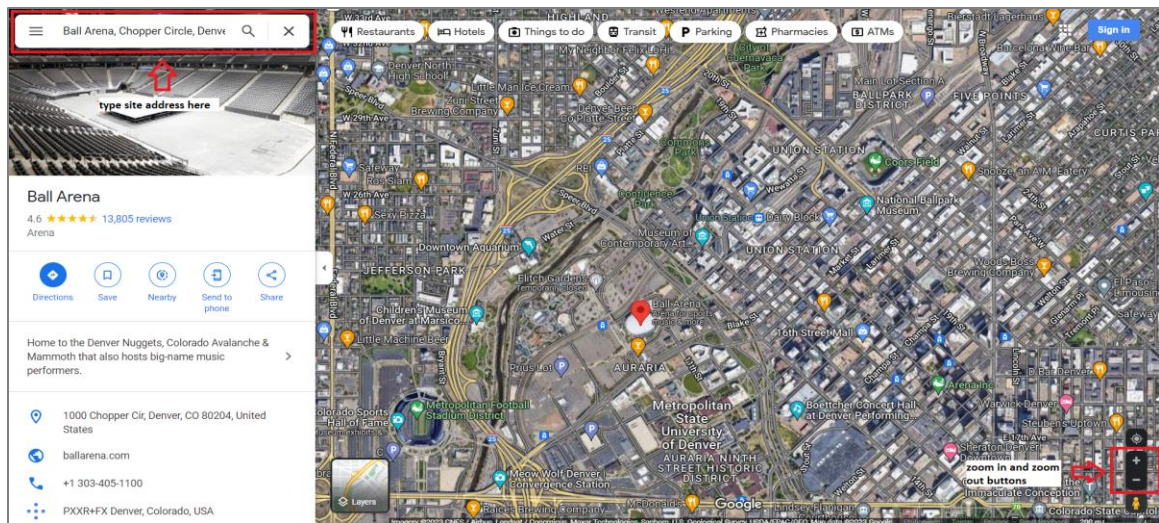
Open <https://www.google.com/maps>

Make sure the google maps is in the “Satellite” Layer. Option for layer views can be found at the bottom left of the page. See image below.

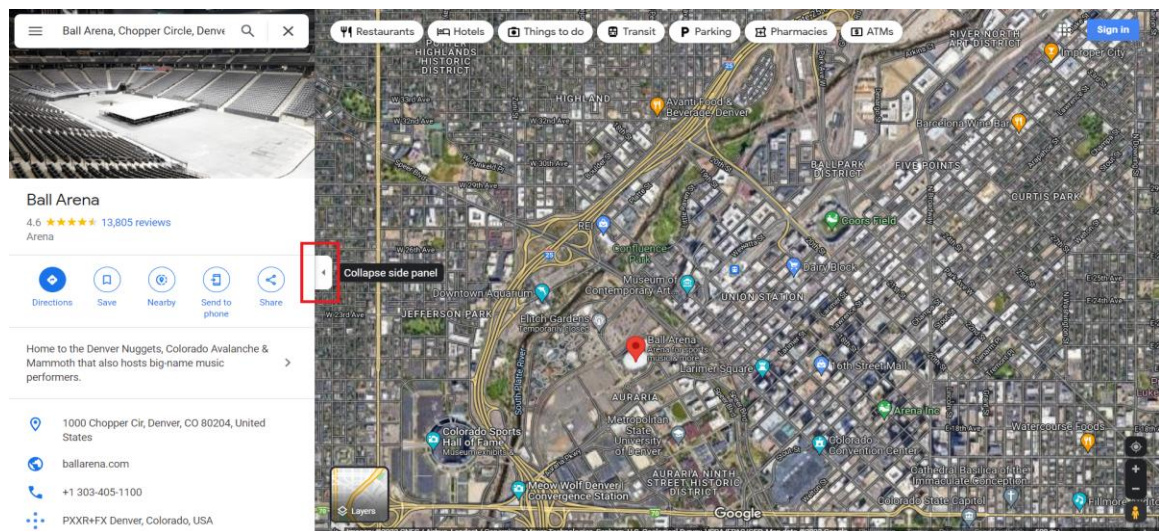


In the search bar at the top left, type in the building site address and press Enter

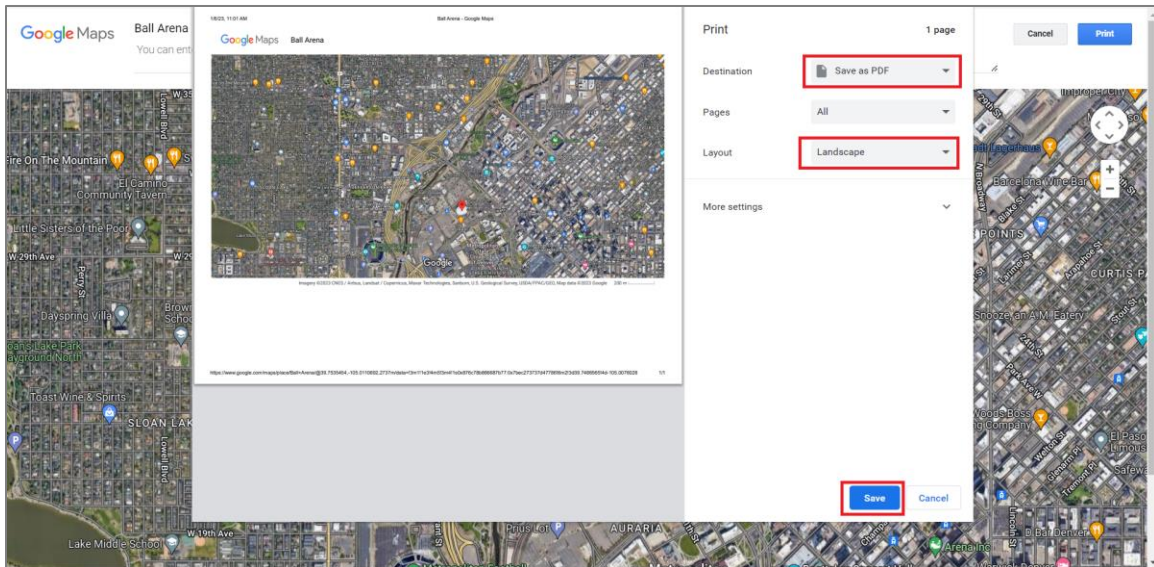
Zoom out by clicking the minus button at the lower right and see to it that there are major highways or landmarks included in the map for reference



Collapse the side panel by clicking the side arrow button.



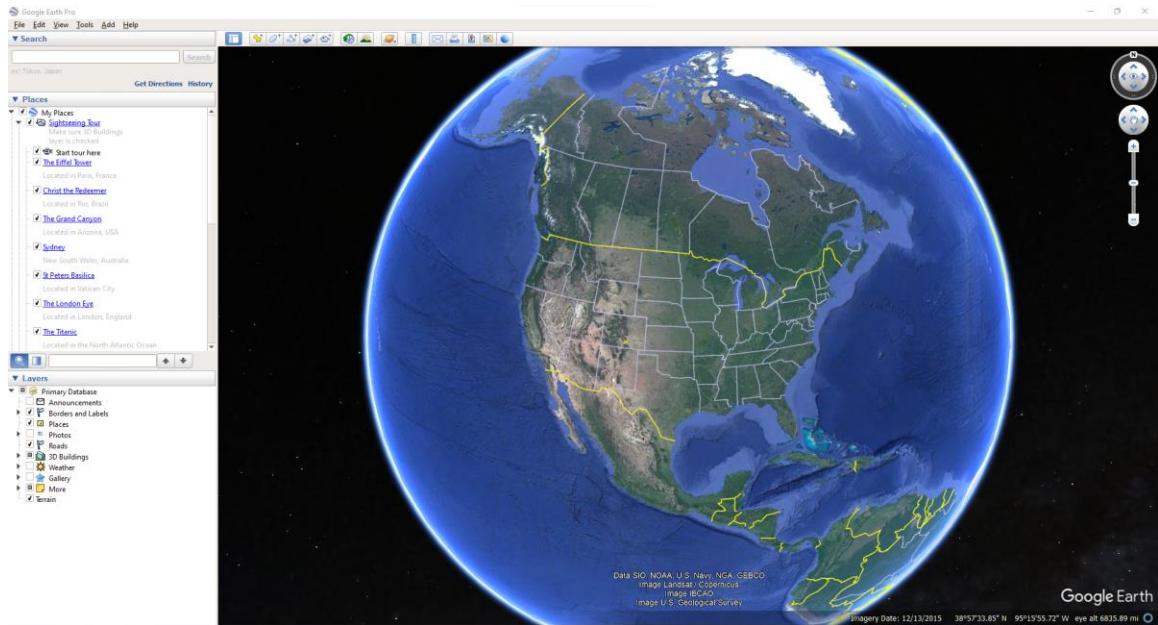
Press Ctrl + P and select Print. A new window will appear. For the Destination, select “Save as PDF” in the dropdown list. For the Layout, select “Landscape” from the dropdown list and press save. Insert filename and press save.



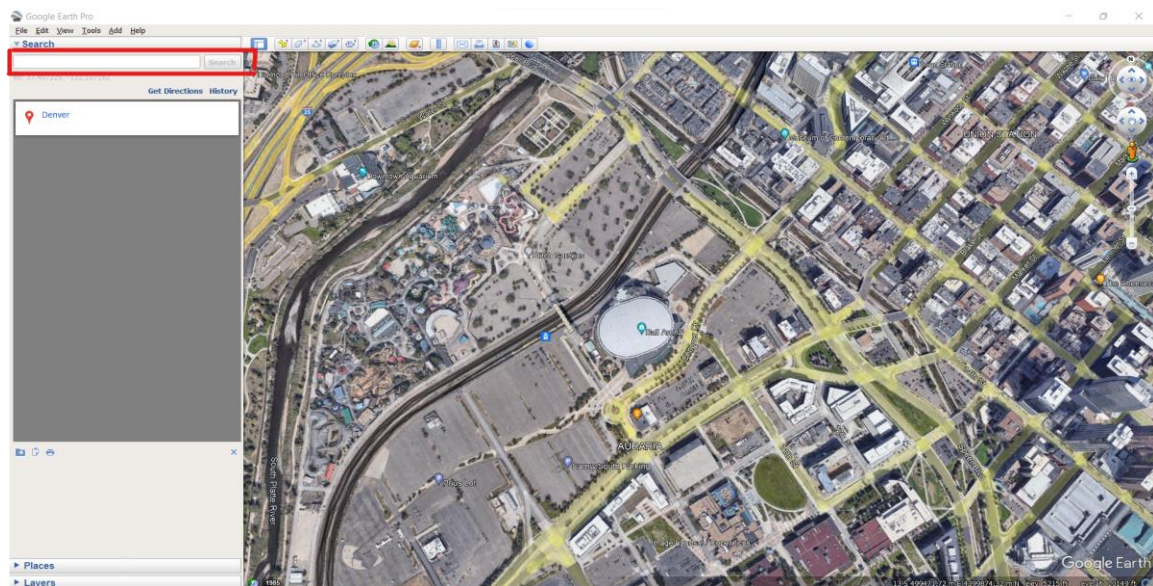
GOOGLE EARTH

Install and Open Google Earth Pro app/software. The software may be downloaded from this website: <https://www.google.com/earth/versions/>

If you are on a personal computer, select “Google Earth Pro on Desktop”. When you launch the software for the first time, you will see a screen like the one shown below.

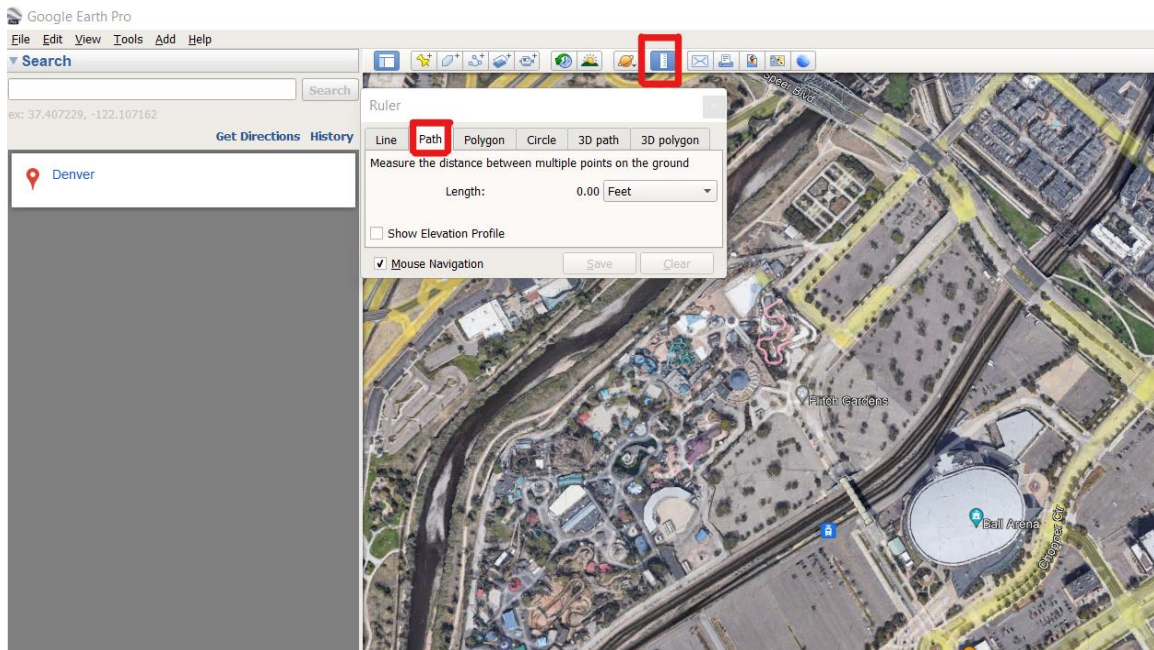


In the search bar at the upper left, type in the building site address. See image below.

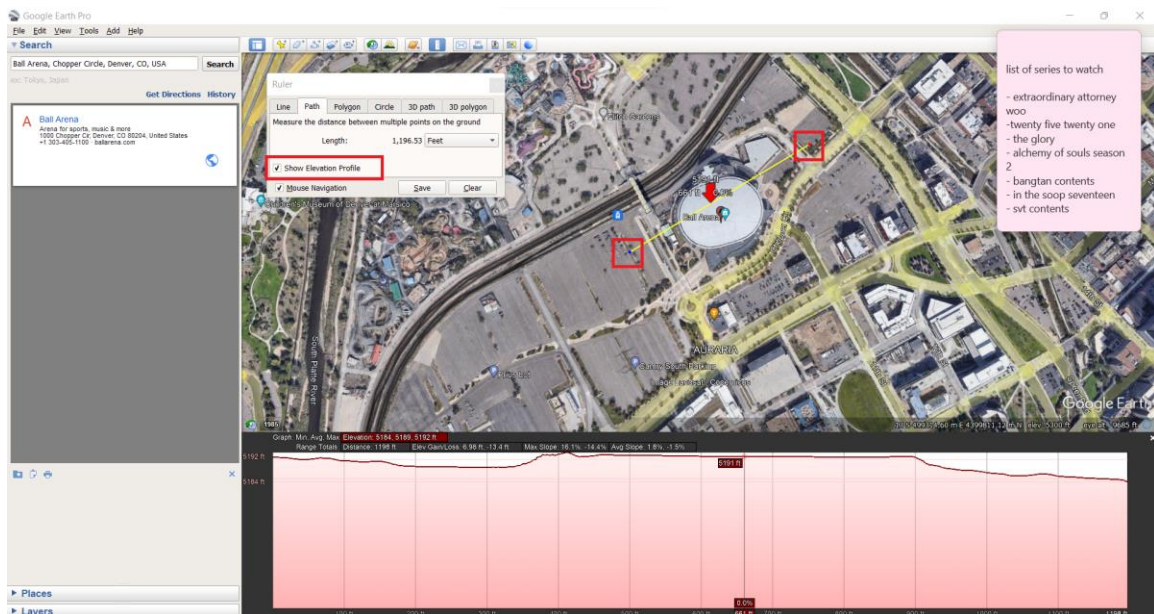


Zoom in to the desired location (site address)

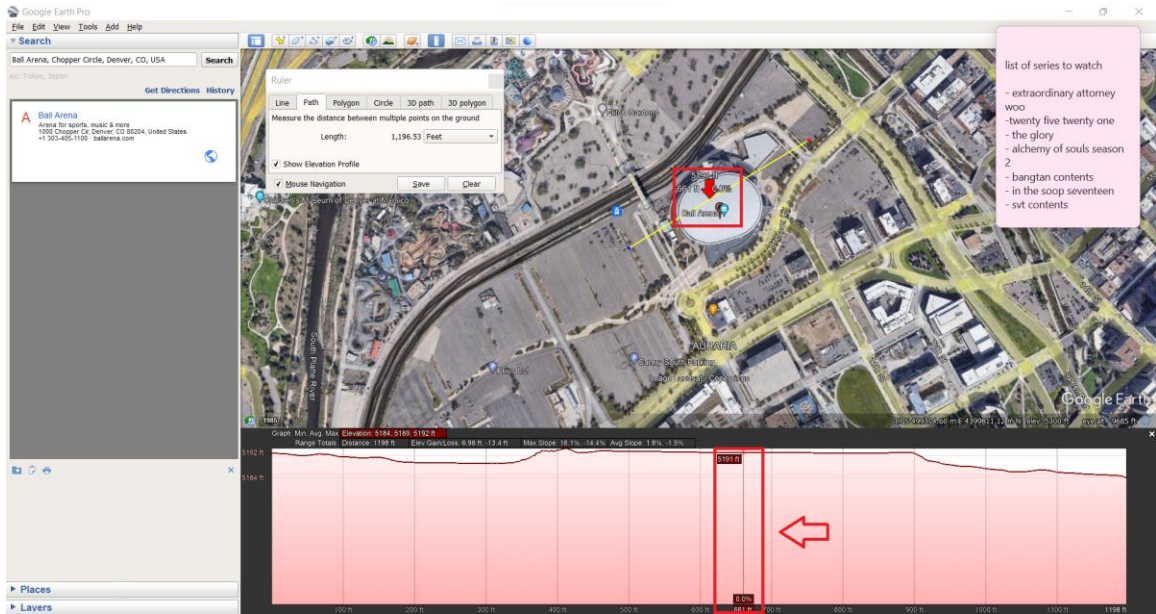
Click on the ruler button and select the "Path" tab



Draw a line by clicking two points across the building site, then tick the checkbox for “show Elevation Profile”.



The red graph below shows the elevation profile of the line that you have drawn. When you place your cursor over the elevation profile, the red arrow pointing to the line corresponds to its elevation (in ft)



Using the snipping tool, snip the site location with the elevation profile below and save as PNG file, insert filename and press save.